

1 Teaching

Develop further the two strands of metacognition and self-regulated learning: questioning and challenge

Ongoing embedding of Mastery Maths

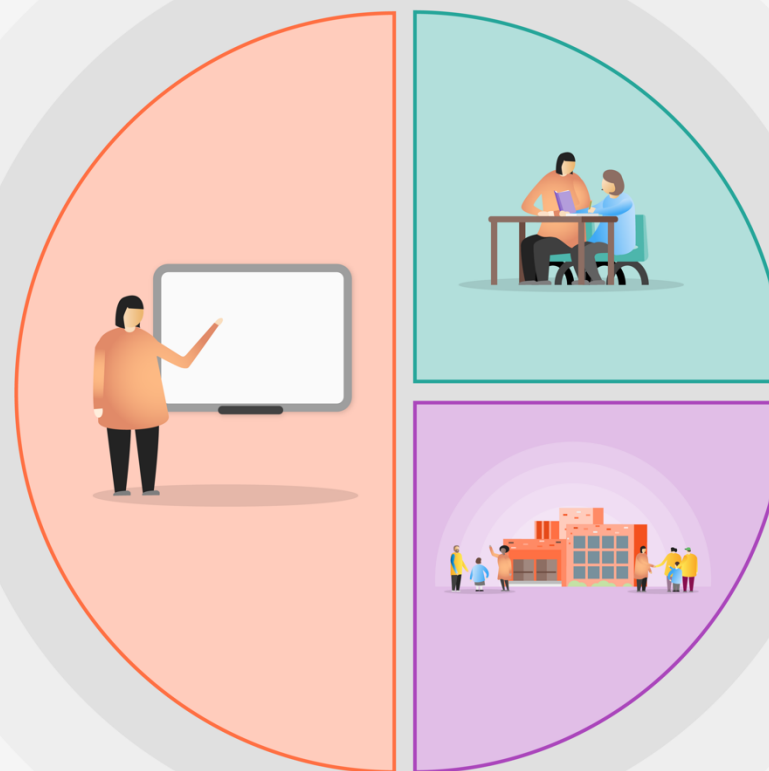
Tiered approach to staff CPD:

- NQT/TQTs to undertake instructional coaching
- Early years teachers to undertake Trinity Outstanding Teacher Intervention
- UPS teachers to undertake CPD research based learning project

Ongoing sharing of PP micro-strategies using class progress sheets

Ongoing STEM training followed by use of Science EEF guidance report

Numeracy and literacy focus across the curriculum



2 Targeted academic support

- Home group model for students with EHCPs
- Deployment of En/Ma HLTAs to support catch-up in all years
- Tutor time interventions in Year 11
- Use of national catch-up programmes
- Use of Accelerated reader and targeted literacy interventions
- Masterclass programme in the summer term
- Summer schools for new Y7 and Y10

3 Wider strategies

- Behaviour and expectations strategy
- Attendance strategy
- Aspiration strategy
- Wellbeing strategy
- Pastoral and alternative provision strategy
- Equity strategy